

PEACEPLUS Programme

Area 1.4 Reimagining Communities

Pre-Development Workshop
Agenda

- i. **Introduction & Welcome** - Gina McIntyre, CEO
- ii. **Overview of PEACEPLUS Programme and Investment Area 1.4** - Declan McGarrigle, Director of PEACEPLUS Development
- iii. **Overview of Policy Interests from Northern Ireland** - Tony McKibben, Department for Communities
- iv. **Overview of Policy Interests from Ireland** - Rosie Smyth, Department of Rural and Community Development
- v. **Questions and Answers**
- vi. **Comfort Break**
- vii. **Pre-Application Support & Concept Note** - Alan McAdam and Fergal O'Donnell, McAdam Design
- viii. **How to Build a Strong Proposal**
- ix. **Questions and Answers**

Submit all questions to
communications@seupb.eu

An aerial photograph of a construction site. A large red tower crane is positioned on the left side of the frame. The site features several rectangular concrete structures under construction, with visible rebar and formwork. The ground is a mix of dirt, gravel, and concrete. In the background, there are more construction materials and equipment. The overall scene is active and shows the early stages of a building project.

PEACEPLUS Programme

Area 1.4 Reimaging Communities

Pre-Development Workshop

Questions:
communications@seupb.eu

PEACE IV Shankill Women Centre



Introduction & Outline of Workshop

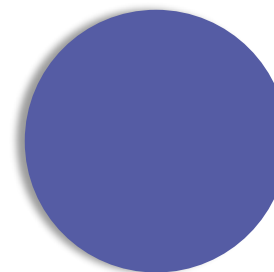
- PEACEPLUS Programme. Context and Development
- Overview of Area 1.4: Reimagining Communities
- Government Departments – Policy context
- Pre-Development Support & Concept Note
- How to Build a Strong Proposal
- Q&A



Questions: communications@seupb.eu



PEACEPLUS Programme



PEACEPLUS: Context

How did we get here?

- Support of the NI Executive, the Government of Ireland, the UK Government and the European Union.
- Building upon previous PEACE & INTERREG programmes.
- Renewed focus on peace and reconciliation.
- Ensuring all projects contribute to cross-border and economic and territorial development.



The Peace Bridge
Derry-Londonderry



How was PEACEPLUS developed?

Intensive review, research and public engagement:

- Stakeholder engagement (2019-2020)
- Public events – including specific events with young people
- Survey submissions
- Public consultation (2021)
- Bi-laterals with government north-south (ongoing)

Questions: communications@seupb.eu

PEACEPLUS (2021-2027)



- Programme area: Northern Ireland & the border counties of Ireland
- Programme value: **€1.144bn**
- Up to 80% maximum ERDF funding (100% grants available)
- Six themes, 22 investment areas
- Participation from partners outside the area

PEACEPLUS – Where does Reimagining Communities sit within the programme?

Thematic Areas

Investment Areas





Theme 1: Building peaceful and thriving communities

- Theme 1 is at the forefront of the previous PEACE Programme.
- Focus on improving relationships between communities (at local and regional level)
- Practical cross-community and cross-border contact has been fundamental to the PEACE & INTERREG since their inception.

PEACEPLUS – Reimagining Communities

**Theme 1. Building
peaceful and
thriving
communities
(€250m)**

**1.1 Co-
designed Local
Community
Action Plans**

**1.2 Empowering
Communities**

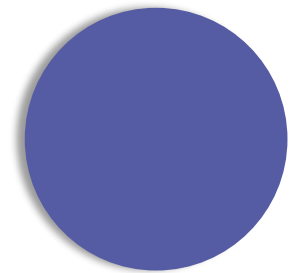
**1.3 Building
Positive
Relations**

**1.4 Reimagining
Communities**



Reimagining Communities

OVERVIEW OF AREA 1.4





Reimagining Communities

Specific Objective

“To create a more cohesive society through an increased provision of transformative shared space and services, which will support and embed peace and reconciliation”



Questions: communications@seupb.eu

Reimagining Communities

Result Orientation

An increase in the number of individuals and groups regularly accessing new or reimaged shared spaces, which have been co-designed on a cross-community basis; and spending recreational time or accessing services therein.

Questions: communications@seupb.eu





Reimagining Communities

Delivering impact

- Every project must bring about a positive change in the form of clear, meaningful and sustainable 'distance travelled' for communities and end beneficiaries.
- Breaking down the barriers of territory and developing spaces that both communities can have access to and share.
- Involving changes in both attitudes and behaviour with a corresponding reduction in segregation.

Reimaging Communities

Actions supported

- Reimaging projects
- Collaboration for re-imaging projects
- Shared Spaces and Shared Facilities
- Supporting usage of Shared Spaces and Facilities

From the design stage, to development of share space and facilities, ending with encouraging cross community usage, which is the essence of a shared space



Reimagining Communities

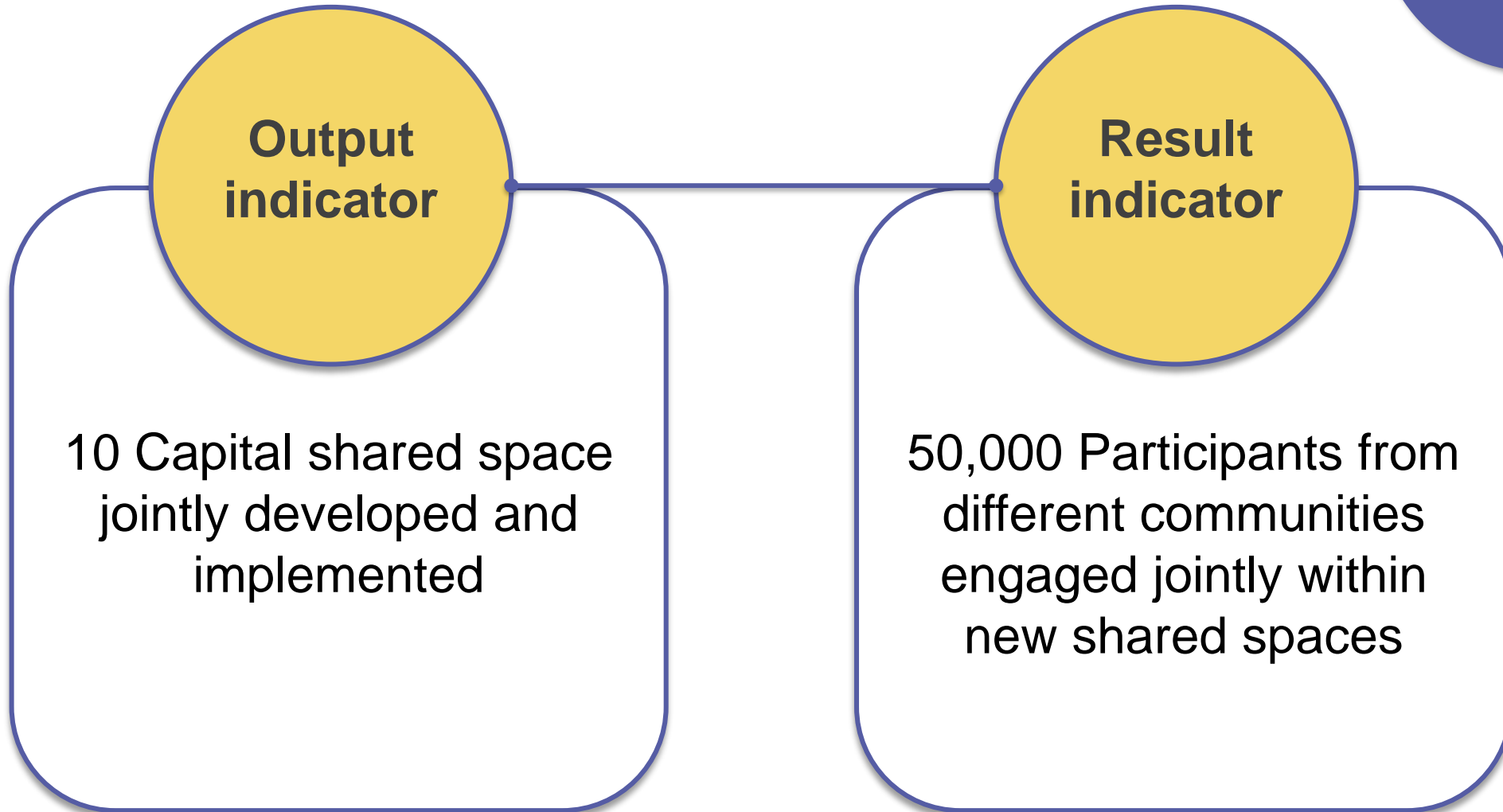
Features of a Programme

- **Full cycle:** From the design stage, to development of share space and facilities, ending with encouraging cross community usage through activity and service provision, which is the essence of a shared space
- Emphasis on new and reimaged community spaces
- Urban and rural
- Cross-community and cross-border usage
- Transformative effect locally as well as having regional significance

Indicative project budget:

- Average: €7.5m
- Minimum: €2m
- Maximum: €12-15m

Reimagining Communities



Questions: communications@seupb.eu

Reimagining Communities

Capital Shared Spaces

OUTPUT

- Shared spaces: **infrastructure** for programmes that result in meaningful and purposeful contact between persons from different communities.
- Land, buildings, parks and peace line interface barriers regeneration.
- **Managed** in a manner that respects the rights, equality and diversity of all.
- High quality **design and sustainable development** principles, including measures to minimize carbon emissions.
- **Achievement** when the shared space is open and becomes operational and provides evidence of shared usage.



Reimaging Communities

Participants from different communities

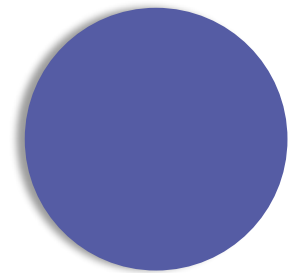
RESULT

- Joint engagement: **meaningful and purposeful contact** between persons from different communities.
- **Different communities:** different religious belief, ethnic or racial group.
- **Achievement:** participants that have engaged in a joint activity or joint usage occurrence in a shared space.
- **Variation** between the two main community backgrounds less than 20% (60/40 split).
- Border region or Ireland 80/20 split acceptable.
- Participation of other communities encouraged (minority ethnic communities and different racial backgrounds).
- Engagement can be a **single event or a multiple event.**





TIMESCALES

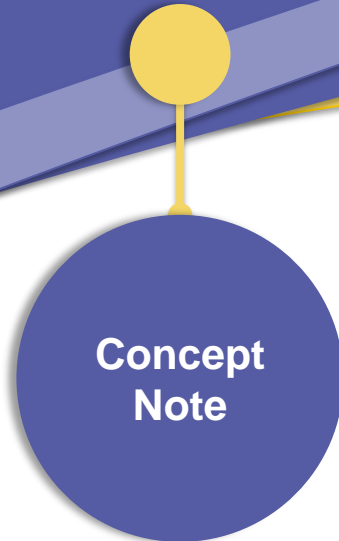


Questions: communications@seupb.eu

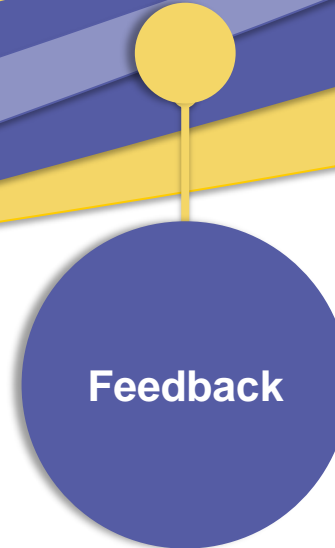
What next?



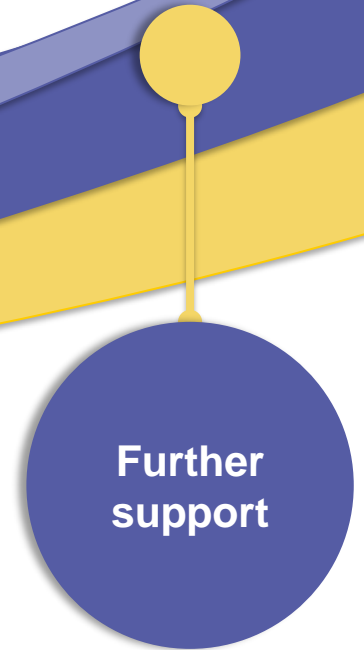
Available for 1.4



Downloadable from website – complete and return as soon as you can (by 1st August)



Aim to provide feedback within 15 working days



Further support will depend upon both the fit and quality of what is outlined in the concept note

● **Any Questions:** Allen McAdam/ Fergal O'Donnell

seupb@mcaconsulting.ie

In Due Course...

The following documents will be made available and should be consulted before completing the formal application form:

- PEACEPLUS Cooperation Programme
- The Programme Manual
- Guide for Applicants
- Call for Applications to Area 1.4

The Programme Overview is available on the [SEUPB Website](#)





**OPEN
CALL**

**Autumn 2022
(subject to approval)**

2022
**Send
Concept
Notes**

Throughout process - 2022
**Ongoing
support
on offer**

From July 2022
**Pre-
development
Support
Begins**

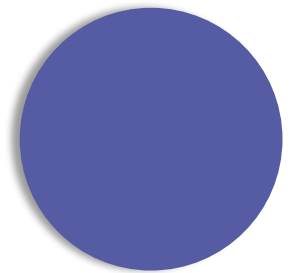
Timelines

Reimagining Communities



Feedback


Please do not hesitate to contact us with any questions in the future.





Tony McKibben

Department for Communities (DfC)



Department for
Communities
www.communities-ni.gov.uk

An Roinn
Pobal

Depairtment fur
Commonities

About the Department for Communities

- Established May 2016 following the restructuring of Northern Ireland Departments.
- Largest of the 9 NICS Departments, DfC works with 15 Arms Length Bodies and number of Advisory Groups.
- 8,600 employees; one third of NICS employees.
- Annual budget: almost £7 billion, including expenditure of £5.9 billion on social security and pension payments.

What DfC do

- Promote healthy housing and the provision of decent, affordable, sustainable homes, and housing support services.
- A social welfare system including focused support to the most disadvantaged areas.
- Provide training and support to jobseekers and employers.
- Bring divided communities together by creating urban centres – these are sustainable, welcoming and accessible to live, work and relax in peace.
- Support local Government to deliver effective public services.
- Maximise public benefits from the culture, arts and leisure sectors.
- Tackle disadvantage and promote equality of opportunity by reducing poverty, protect the interests of children, older people, people with disabilities, and other socially excluded groups; addressing inequality and disadvantage.

DfC Leadership



Deirdre Hargey MLA

- appointed Minister for the Department for Communities (DfC) on 11 January 2020.



Colum Boyle

- appointed Permanent Secretary in the Department for Communities (DfC) in April 2022.

Arms Length Bodies

- Armagh Observatory and Planetarium
- Arts Council NI
- Charity Commission NI
- National Museums NI
- Northern Ireland Housing Executive
- NI Central Investment Fund for Charities
- NI Museums Council
- Sport NI
- Vaughan's Charitable Trust
- Ulster Scots Agency
- Foras na Gaeilge
- NI Commission for Children and Young People
- Libraries NI
- Commissioner for Older People NI
- Ulster Supported Employment Limited
- Local Government Staff Commission for NI
- Office of the Discretionary Support Commissioner
- NI Local Government Officers Superannuation Committee



About the Department for Communities

WHO WE ARE

The Department for Communities delivers a diverse range of functions that impact on the lives of everyone in our society. Our common purpose is to make this a great place to live for everybody by supporting people, building communities, shaping places.

**Supporting
people**

**Building
communities**

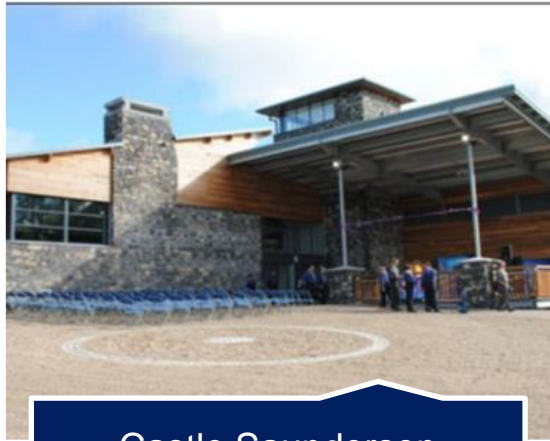
**Shaping
places**

Our Role in the PEACE Programme

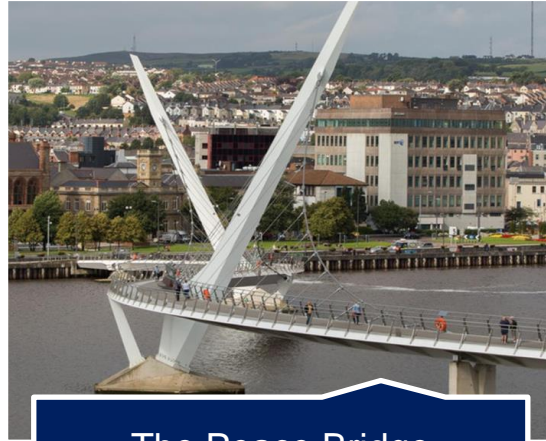
- The Department for Communities (DfC), alongside the Department for Rural and Community Development (DRCDD) in the Republic of Ireland, fulfils the Accountable Department role.
- As an Accountable Department our input is required throughout the full process of programme development and delivery.
- DfC previously fulfilled the Accountable Department role for the Creating Shared Public Spaces theme of PEACE III and the Shared Spaces-Capital theme of PEACE IV.

Questions: communications@seupb.eu

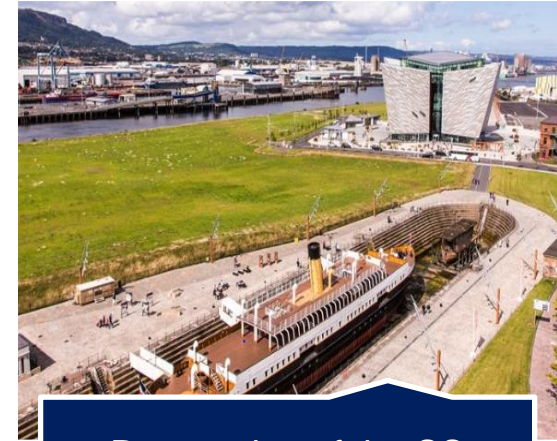
Previous PEACE Projects



Castle Saunderson
(PEACE III)



The Peace Bridge
(PEACE III)



Restoration of the SS
Nomadic (PEACE III)



Monaghan Peace Campus
(PEACE IV)



Newforge Community
Development Trust
(PEACE IV)

Further Information

Details of the shared space projects we have been involved in can be found at;

- [EU Peace III Programme | Department for Communities \(communities-ni.gov.uk\)](#)
- [EU Peace IV Programme | Department for Communities \(communities-ni.gov.uk\)](#)

Any queries should be directed to the [European Branch \(Urban Policy\)](#)

All links will be made available on the SEUPB website after the workshop.

Questions: **communications@seupb.eu**

Thank you



Department for
Communities
www.communities-ni.gov.uk

An Roinn
Pobal

Depairtment fur
Commonities



Policy Perspective/Considerations
Investment Area 1.4
Reimagining Communities Workshop
8th July 2022

Accountable Department of Rural and Community Development

Questions: communications@seupb.eu



Mission: promote rural and community development, and support vibrant, inclusive and sustainable communities throughout Ireland.

Vision: a sustainable society with individual and community wellbeing at its heart, supporting thriving rural communities, where all communities, urban and rural, have opportunities to grow together and develop economically, socially and culturally.

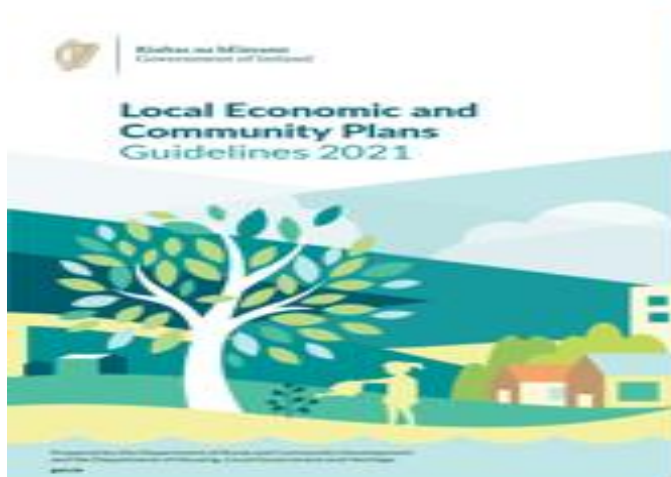
Objective: all programmes targeted at the sectors and areas most in need; acknowledging the ongoing and future economic and social challenges we face, as a result of a number of contributing factors.

DRCD engagement on PEACE Shared Spaces



- ❖ DRCD is accountable for many areas under PEACE IV including the Shared Spaces Capital Projects and the Shared Spaces element of the Local Authority PEACE Action Plans.
- ❖ Re-imaging Communities Objective is to create a more cohesive society through an increased provision of shared spaces and services, which will benefit and embed peace and reconciliation.
- ❖ Many here have played a leading role in the delivery of PEACE Programmes and had success in bringing forward Peace Shared Space projects;
- ❖ Similar to PEACE IV, your project must be aligned with the relevant Government and EU Strategies/Policies, Local and County Development Plans and Local Economic and Community Plans.

Ireland – Key Documents



Ireland – Key Strategy Documents



Programme for Government: Our Shared Future

We have committed to:

- ❖ working with our EU partners and UK Government to secure the necessary funding for the EU PEACEPLUS Programme; and
- ❖ contribute to peace-building initiatives.

Project Ireland 2040

- ❖ a combination of the **National Development Plan** which sets out the investment priorities that will underpin the implementation of the **National Planning Framework** and submissions must demonstrate relevance to Project Ireland 2040.

Key Strategy Docs continued.



Our Rural Future: Rural Development Policy 2021 – 2025 focuses on

- ❖ optimising the opportunities for rural communities, assisting the regeneration and development of rural towns and villages;
- ❖ enhancing the participation, leadership and resilience of rural communities, to contribute to local and national economic recovery, and
- ❖ to enable people to live and work in a vibrant environment and the **Town Centre First Policy** is central to this vision.

Town Centre First Policy aims:

- ❖ to create town centres that function as viable, vibrant and attractive locations for people to live, work and visit, while also functioning as the service, social, cultural and recreational hub for the local community.

Ireland – Local Authority Specific



Local Development Plans

- ❖ Identify the planning and sustainable development of the county over the lifetime of the plan.
- ❖ Provide an overall strategy for the social, economic, cultural and physical development of the county, including improvements to local amenities.
- ❖ Must be compatible with National and Regional Planning Strategies including the **National Planning Framework** and **Regional Spatial and Economic Strategies**.
- ❖ Complementary to the **Local Economic and Community Plans**; currently under consultation and development in each Local Authority area in the border region of Ireland.

Sustainable, Inclusive & Empowered Communities



A 5-year strategy to support the community and voluntary sector in Ireland 2019-2024, supports partnership and collaborative effort at all levels and between all stakeholders, comprising high level objectives and associated actions to support communities, their representative organisations, and the community and voluntary sector.

Strategies currently under development



A National Outdoor Recreation Strategy

- ❖ Currently being developed by Comhairle na Tuaithe (The Countryside Council) in conjunction with the Department of Rural and Community Development.
- ❖ Expected to launch late 2022.
- ❖ Will provide a **vision** and an **overarching framework** for the growth and development of outdoor recreation in Ireland, creating a shared approach for the many strategies, programmes, agencies and elements in Ireland's outdoor recreation sector.



#OurRuralFuture

**Outdoor Recreation Strategy
Public Consultation**

-  Have your say on the development of our outdoor amenities
-  Delivery of the strategy is a key commitment of 'Our Rural Future'
-  Closing date for submissions 23 June

An Roinn Forbartha
Tuaithe agus Pobail
Department of Rural and
Community Development

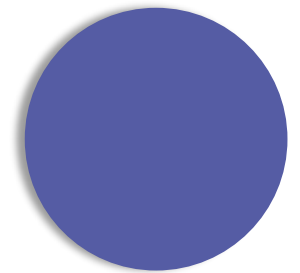


Thank you



**Questions for Gina,
Declan, Tony or Rosie**

**send to
communications@seupb.eu**





PEACEPLUS Programme

Area 1.4 Reimagining Communities

Allen McAdam/ Fergal O'Donnell



Overview

- Budget and indicators
- Indicative Actions/
Projects
- Eligibility
- Selection Criteria
- Preparing to apply





Budget and indicators

Budget for first call €75m (€60m ERDF / €15m government)

Up to 100% level of aid (80% Programme/20% government intervention)

Output Target 10 Applications supported

Result Target 50,000 participants/beneficiaries

Estimated average allocation €7.5m

Minimum allocation €2m

Indicative maximum €12-15m

Questions: communications@seupb.eu

Indicative projects/ actions

1. Actions which will enable key representatives and leaders of different communities to collaborate and co-design re-imagining projects on a cross border and or cross community basis, which will result in **significant social and economic regeneration and transformation**;
2. Actions which will result in the **re-imagining of existing spaces; including the removal of sectarian symbols and emblems** to encourage increased shared usage and deliver significant peace and reconciliation outcomes for the entire community;
3. The development **of re-imagined and new facilities which will accommodate social enterprise and social innovation** projects, which will benefit the entire surrounding community through cross community usage; this should include facilities left vacant post the COVID-19 pandemic;

Indicative projects/ actions (cont'd)

4. The development of **new and inclusive shared spaces, which will have a transformative effect on local areas** and enable shared usage by groups and individuals from different community, cultural and political backgrounds; particularly within those communities which have been most impacted by the conflict and experience poverty, inequality and social exclusion as a direct result;
5. The development of shared facilities and programmes which enable significant and sustained **multi and inter-generational** usage on a cross border and or cross community basis and include a focus on minority groups;
6. Programmes which address the levels of sectarianism and racism or which support the sustained cross community usage of new and re-imaged community spaces and facilitate access to shared services
7. Programmes that target children and young people; health and wellbeing; social enterprise; tourism and heritage; education; arts and culture; and sport.

Eligibility

1. National, regional and local authorities;
2. Regional and local development agencies, chambers of commerce;
3. Universities, colleges, higher education, research institutions;
4. Non-governmental organisations (NGOs);
5. Sectoral agencies and business support organisations;
6. Voluntary sector organisations;
7. Other relevant public-like organisations contributing to the development of the programme area;
8. Private sector – specifically micro, small, and medium-sized enterprises (SMEs¹) and large companies.

*The above is not an exhaustive list, other bodies may be considered eligible.

Eligibility (cont'd)

Eligible area;

Programme area of Northern Ireland and border counties of Cavan, Monaghan, Louth, Leitrim, Donegal and Sligo

Flexibility for organisations outside of the programme area to get involved provided such collaboration are essential or add significant benefit to the core programme area

Beneficiaries: *Border region 80/20 ,*
minimum split *Northern Ireland 60/40* *(some exceptions)*

Questions: communications@seupb.eu

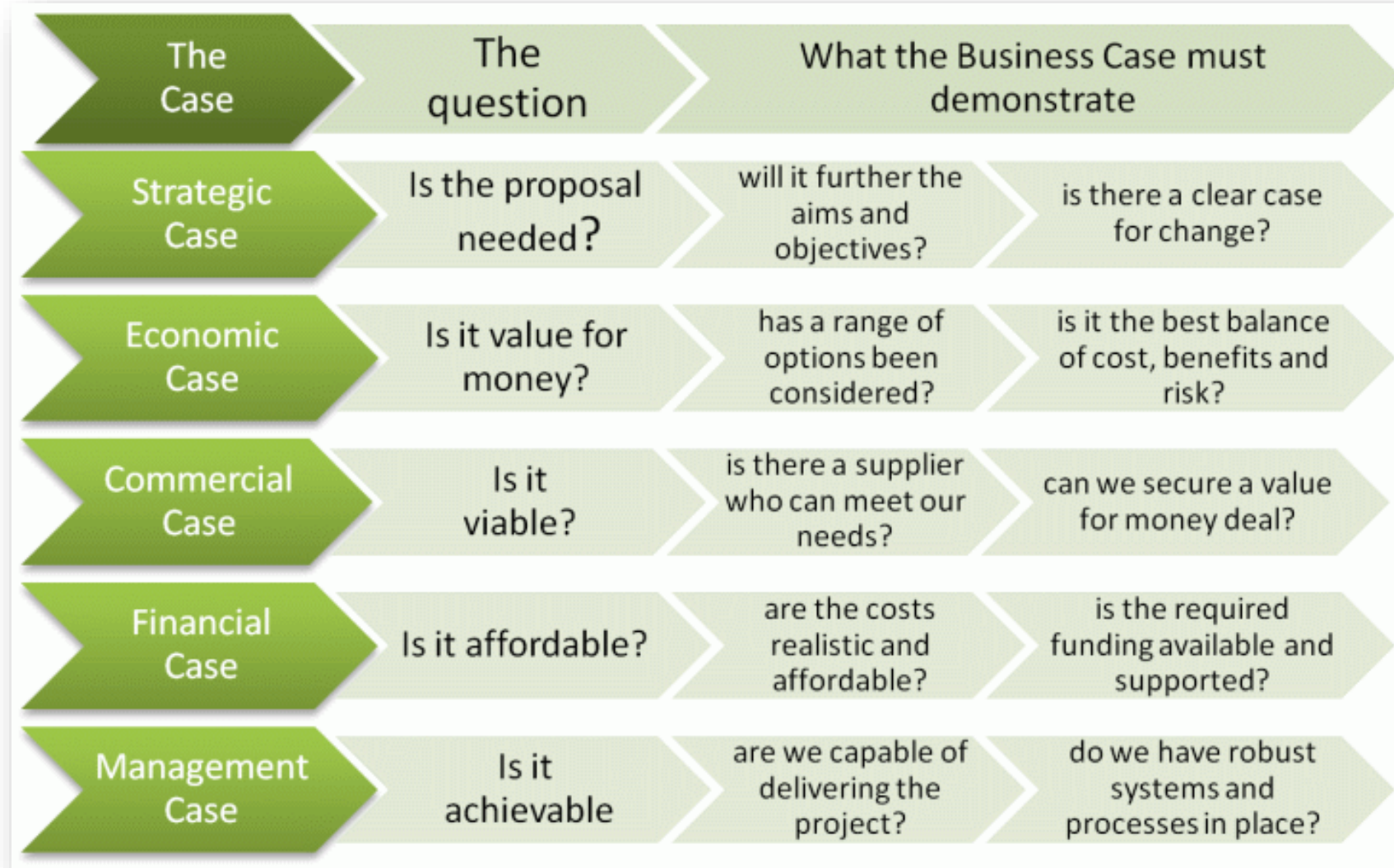
Selection Criteria

1. *Contribute to result and outputs of the theme*
2. *Quality of project design*
3. *Quality of cross community cross border co-operation*
4. *Quality of project team/partnership implementation arrangements*
5. *Value for money*
6. *Contribution to sustainable development*
7. *Contribution towards equality*

Preparing to apply

- Project idea that fits the core programme criteria
- Suitable partnership / collaboration – credible partners with track record/experience
- Clear and unambiguous evidence of need
- Securing a suitable site / title or long terms lease
- Consents and approvals/planning
- Evidence of congruence with Local Development plans / national regional strategies of relevance
- Evidence of financial capacity to underwrite the project
- Utilise the 5 case model in proofing your project for appraisal

The 5 Case Model – Green book / Public Spending Code



Summary

- Assess if 1.4 is really the appropriate avenue to pursue.
- Start immediately to plan for an application
- Formalise appropriate partnerships/collaborations (e.g. MOU's)
- Agree roles and responsibilities and delegate
- Scope process and timelines
- Resource project development phase adequately
- Avail of pre development support

Questions: communications@seupb.eu

PRE-DEVELOPMENT SUPPORT CONCEPT NOTE

PEACEPLUS Programme

Area 1.4 Reimaging Communities

Allen McAdam/ Fergal O'Donnell



Section 1: Project Details

- Project Name
- Lead Partner
- Project Overview (*200 words*)
- Project Location
- Target Area (*approximate geographical area to benefit*)
- Project Start / End Date (*estimated*)
- Indicative Funding Requested (*estimated, min €2 Million*)
- Indicative Target Beneficiary Numbers

Section 2: Partnership

- Outline all project partners (if applicable)

Questions: communications@seupb.eu



Section 3: The Project

Q (i): Tell us how the need for this project has been identified and how it aligns with the stated aims and objectives of Area 1.4 of PEACE PLUS.
(500 words max)

Consider;

- How has need been identified for this project?
- How does your project align with what PEACE PLUS, and in particular Area 1.4, is trying to achieve? i.e. an increase in the number of individuals and groups regularly accessing new or reimaged shared spaces, which have been co-designed on a cross-community basis and spending recreational time or accessing services therein.

Section 3: The Project

Q (ii): Tell us about your project's anticipated outputs and results. (300 words max)

Consider;

- How many sq metres of shared space will your project deliver?
- How many participants will your project benefit / utilise the shared space annually?
- What percentage of beneficiaries from each community will your project support in accessing new or reimaged shared spaced?

Questions: communications@seupb.eu

Section 3: The Project

Q (iii): Describe how your project is cross-community and/or cross-border.
(300 words max)

Consider;

- What geographical area/s will your project cover?
- Is your project cross-border?
- Do the project partners contribute to a cross-community and/or cross-border focus?
- How will you ensure participation from all communities in your project activities so that it may affect meaningful, ongoing, change-focused contact between people from different community backgrounds?
- Is your project making specific effort to include people from minority communities, and if so how?

Section 3: The Project

Q (iv): Please demonstrate how your project will not result in duplication or displacement of existing provision? (300 words max)

Consider;

- Has the issues of duplication and displacement been considered for this project?
- How will these issues be avoided or mitigated?

Questions: communications@seupb.eu

Section 3: The Project

Q (v): Outline the quality of the proposed team, partnership and implementing arrangements. (500 words max)

Consider;

- Outline details of the project team that will manage the project.
- How they are suitably qualified and experienced to deliver on this project?
- Have the lead and/or supporting partners the necessary organisational capacity to manage a large capital build project?
- Have the main project partners worked together in partnership on similar projects in the past?
- What practical arrangements do you have in place to support smooth project implementation and to manage risk?

Section 3: The Project

Q (vi): Please outline the stage of readiness of your project. (500 words maximum)

Consider;

- Outline if a site / location has been secured by the project partners, either by title or long term lease (>25yrs)
- Have any site surveys, scoping studies, concept drawings or plans, feasibility studies been developed for this proposal?
- Have early stage indicative costings been prepared for the project?
- What consents or permissions will be required for the proposal? Have they been applied for?
- Are all consents or permissions achievable within a reasonable timescale and does the applicant have the necessary resources to put the place?

Section 3: The Project

- **Budget Required**

Capital Costs	€
Direct staff costs	€
Total Budget	€
Optimism Bias	€

Section 4: Contact Details

Name of Main Contact Person & Job Title/Organisation	
Telephone	
Email	

Questions: communications@seupb.eu

Submission of Concept Note

- Completed Concept Note to be submitted by email to seupb@mcaconsulting.ie
- Queries can be made in advance to submission via same email
- Deadline for receipt of Concept Note is **7th September** but please submit prior to this date.

Feedback and Pre-Development Support

- Pre Development Support Period – August to December 2022
- Consultants will aim to review Concept Notes and a response provided in no less than 15 days from the date of submission
- Further meetings may be scheduled between consultant and applicant to explore and develop the project idea

Questions: communications@seupb.eu



Questions

submit to
communications@seupb.eu